

MNSURE: COLLEGE STUDENTS!

Sending your student to college is an exciting adventure. Did you consider how your health insurance will work for your student?

- Students who are tax dependents of their parents need to apply for health insurance with their families.
- Students who are independent tax filers and are not claimed as dependents can apply for MNSure programs on their own.
- It's important to know if your student's health insurance will be in-network in the community where they will attend school.

Questions to ask as a family:

- Find out if the college provides on campus health care. What services does this include?
- Is your student able to travel home if s/he is sick, needs a dental appointment or new glasses?
- Have you talked to your student about how health insurance works? Where can s/he go for care and why? What will s/he be financially responsible for?

Do you need MNSure?

1. Check out www.mnsure.org.
2. Know your current health insurance program and company.
3. Make sure your student has his/her own health insurance card(s).

Call Community
Resource Connections
for assistance:
218-333-0880



Find more information here:
[Qualifying Life Events / MNSure](#)

Meet Kat!

Kat is working with CRC at our Blackduck Resource Center location Mondays and Wednesdays. She will be assisting with NAPS and non-MNsure related services. Call 218-835-5768 or email kpsyick-white@crcinform.org for an appointment.



Katherine Pysick-White

*Located at the Blackduck Resource
Center*



Senior Linkage Line

REQUEST AN APPOINTMENT WITH JENN IN BEMIDJI



Call 1-800-333-2433

CRC is hosting Jenn, from SLL, one day each month, by appointment, to meet with people with questions about Medicare. She will talk through the details of Medicare enrollment, coverage options, and plan comparisons.



*Community Resource Connections
716 Paul Bunyan Dr NW
Bemidji, MN 56601*

*We are here to help!
218-333-0880
www.crcinform.org*

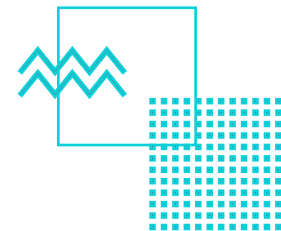
Calling all Member Agencies

Brochures are due for upcoming Clearwater and Beltrami County Fairs!

Please **contact** Executive Director, Ruth Sherman, to arrange a drop off time prior to **August 1st**!

Phone: 218-333-6838

Email:
rsherman@crcinform.org



We want to include your agency information at our booth just like we did at the Cass County Fair.



CRC member agency booth at the Cass County Fair July 2022